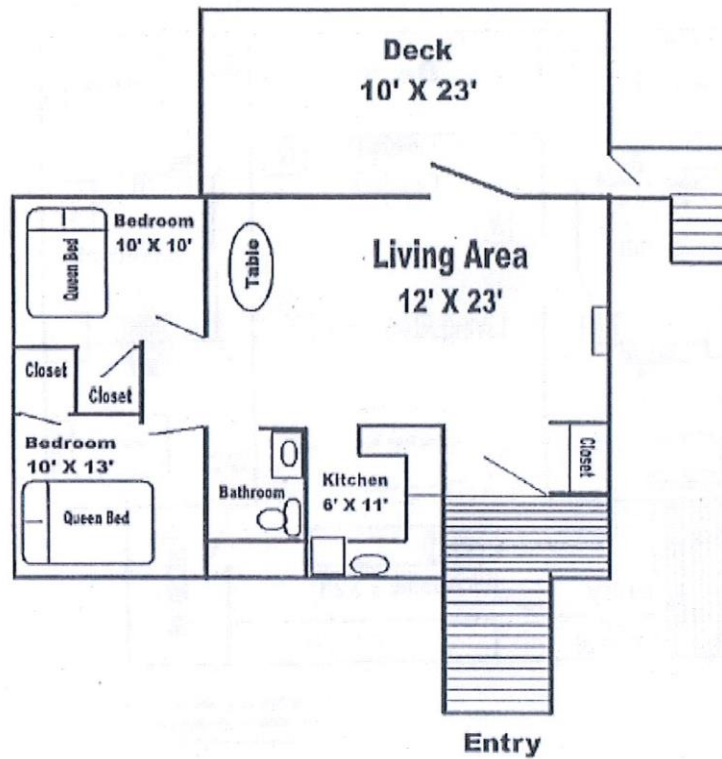


Two-Bedroom Standard Cabin

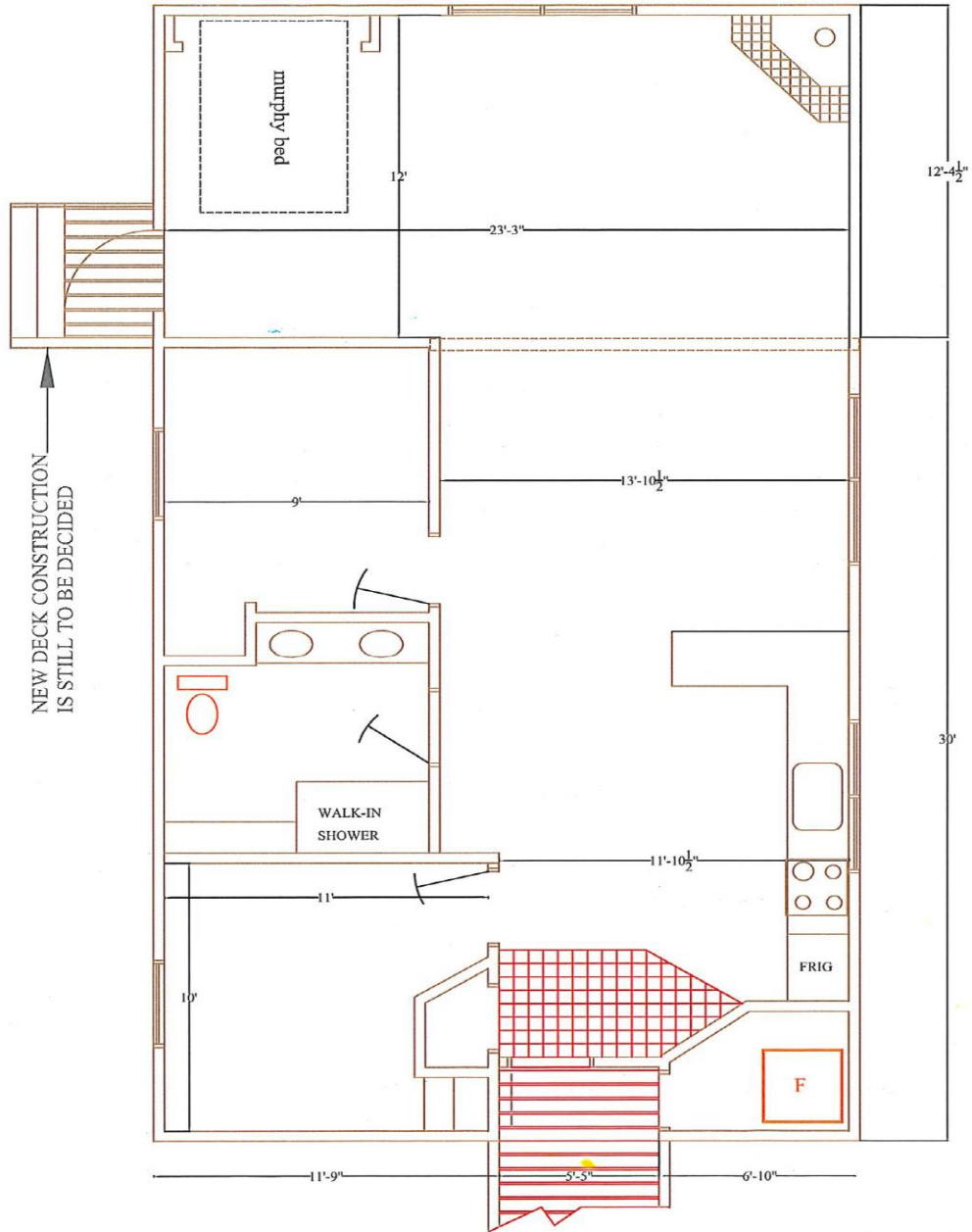


Renovated Cabins:

23, 24, 25, 31, 34, 35, and 37

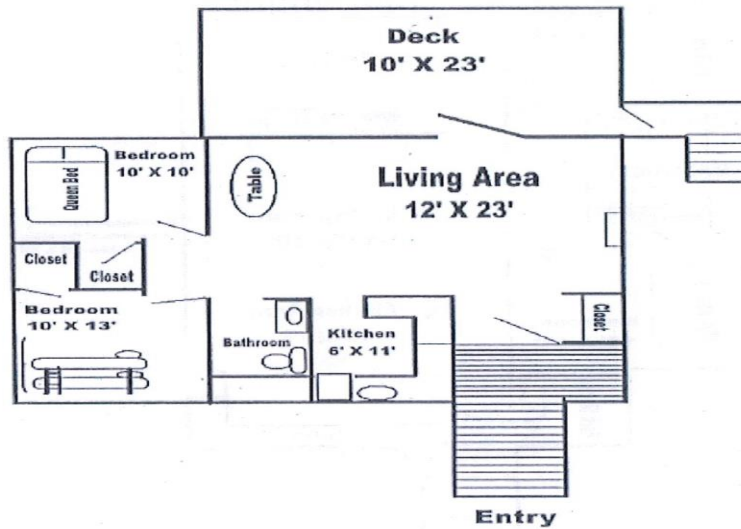
The decks were taken out and the living room was extended. A Murphey bed was added in the living room. New carpet and stone work on the fireplace was replaced. New appliances were added to a few cabins. A new deck was added after completion.

ATTACHMENT A



BARRIER FREE NEW FLOOR PLAN (910 SF)
Prairie Wolf Cabins 21 & 30

Two- Bedroom Single Level Cabins



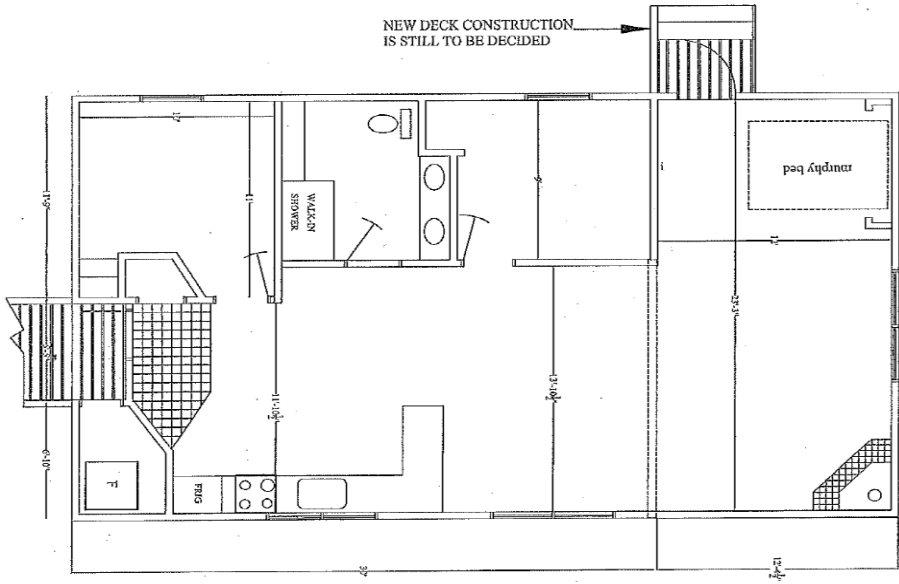
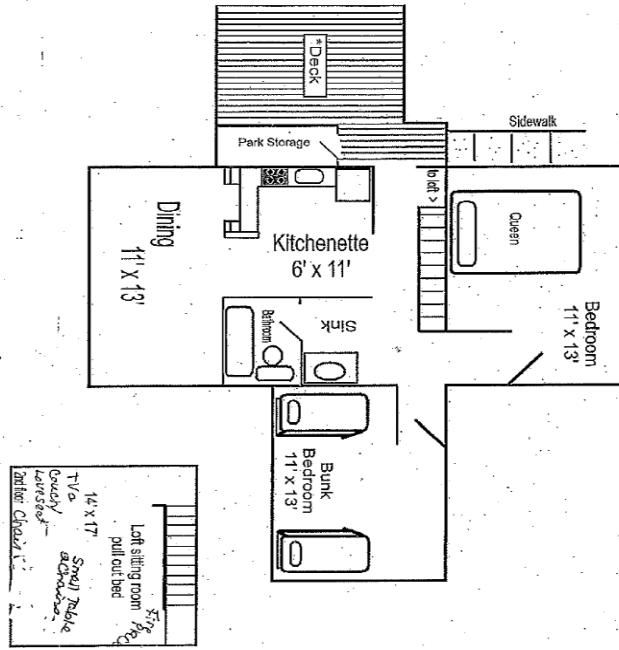
Renovated Cabins:

15, 17, 18, 19, 26, 27, 29, 32, and 33

The decks were taken out and the living room was extended. A Murphey bed was added in the living room. New carpet and stone work on the fireplace was replaced. New appliances were added to a few cabins. A new deck was added after completion.

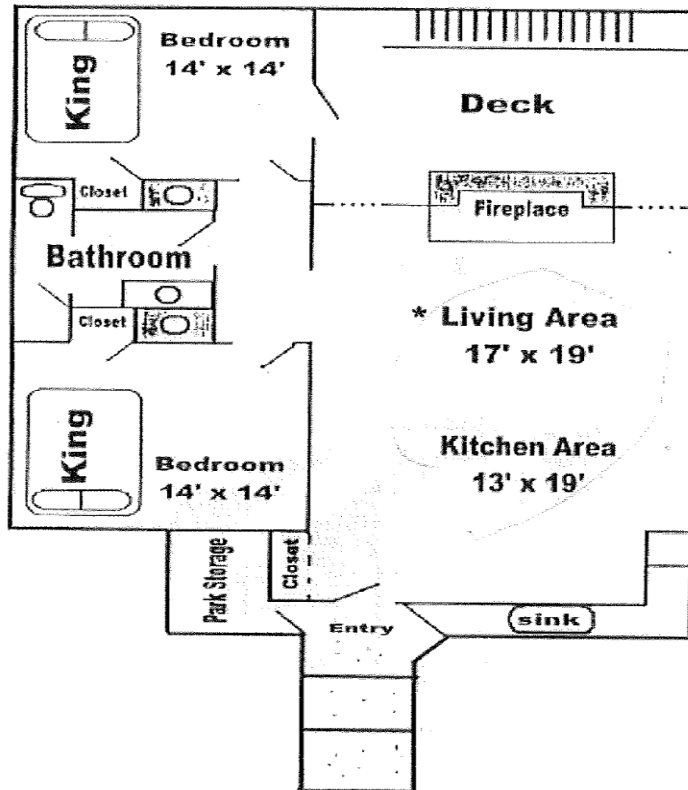
ATTACHMENT A

Tree Top Cabin



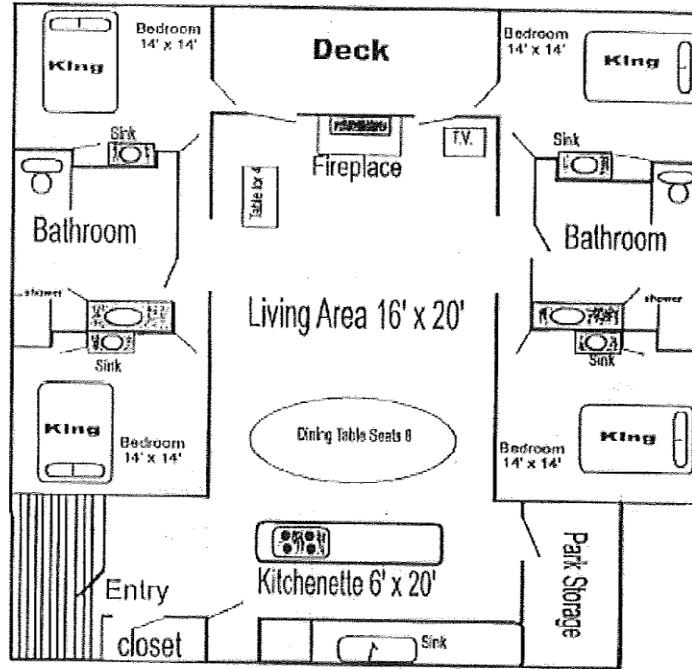
BARRIER FREE NEW FLOOR PLAN (910 SF)
Prairie Wolf Cabins 21 & 30

Two- Bedroom Deluxe



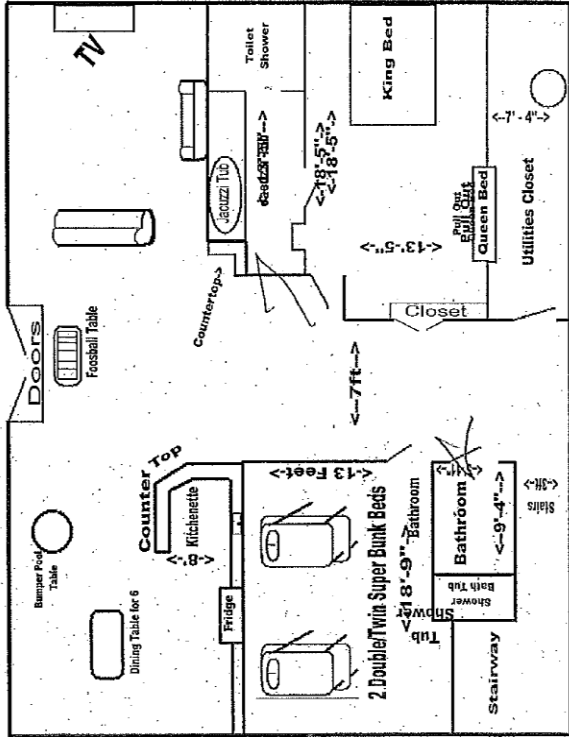
Note: Fireplaces are located the middle of the living area in cabins #38 & #39.

Four-Bedroom Deluxe



*Notes: Fireplaces are located in the middle of the living area in cabins #40 & #41

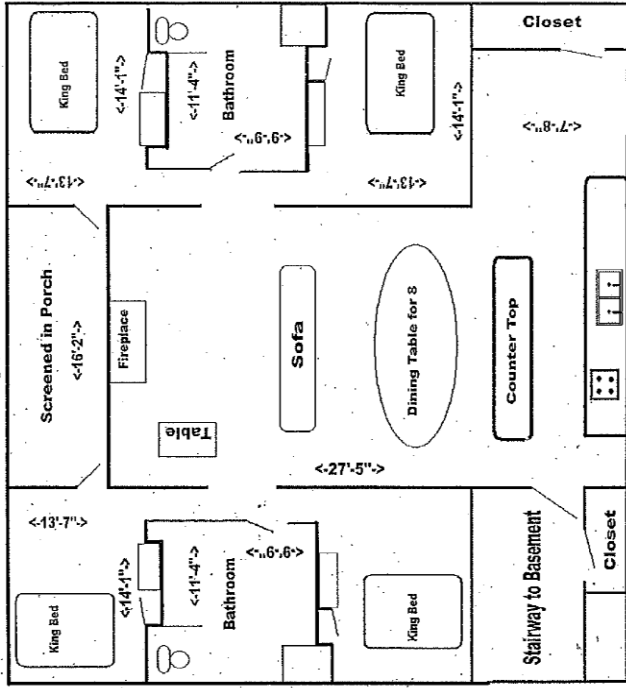
Six Bedroom Cabin-Basement



The Basement Level Consists of:

- One Bedroom-** With a king sized bed and queen size bed. This bedroom has its own bathroom which has a jacuzzi tub, sink/vanity, toilet and shower separate from the jacuzzi tub.
- One Bedroom-** With two sets of super bunk beds (a double on the bottom and a regular sized bunk on top)
- A Second Bathroom-** Consists of sink/vanity, toilet and bathtub/shower combination.
- Family room/rec room-** Has a foosball table, bumper pool table, Television, couches, chairs etc., cabinets with single sink, side by side freezer/fridge, microwave, patio doors which lead to a small patio outside

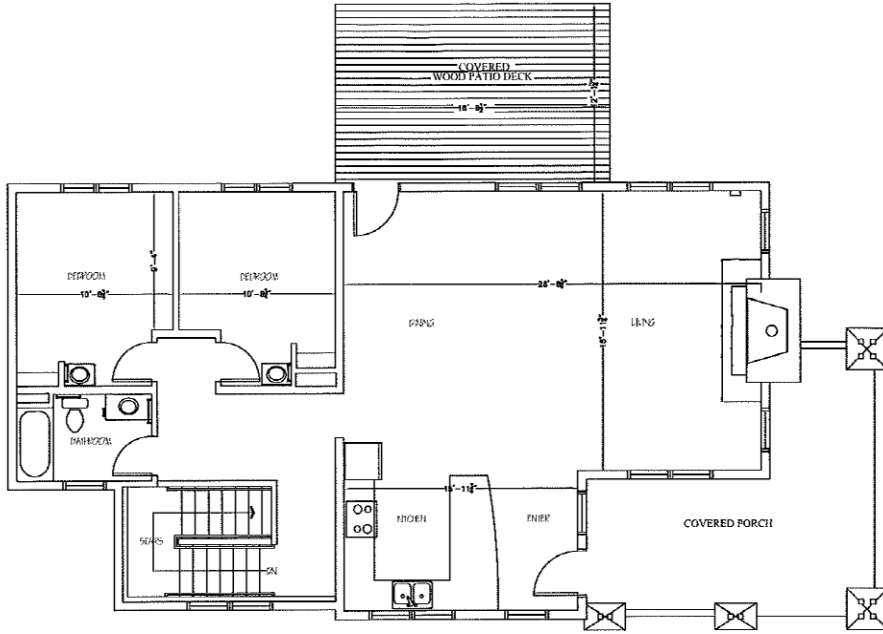
**Six Bedroom Deluxe Cabin
Upstairs**



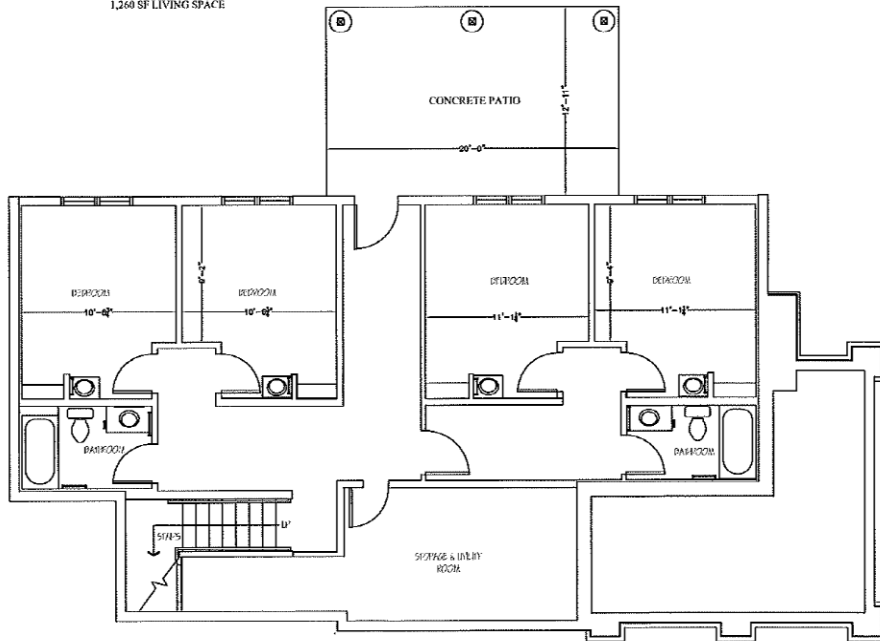
The Main Floor Consists of:

- Four bedrooms-** Each bedroom has a king sized bed sink/vanity.
- Two bathrooms-** One between each set of bedrooms. These bathrooms have a sink, vanity, toilet and shower. No Tub
- Kitchen-** Which has a side by side freezer/fridge, two stoves, dishwasher, microwave, toaster, coffee pot, double sink, island-type counter and cabinets with a single sink.
- Living Room/Dining room-** With a TV set, fire place queen-sized sofa sleeper, couches, tables and chairs.

ATTACHMENT A



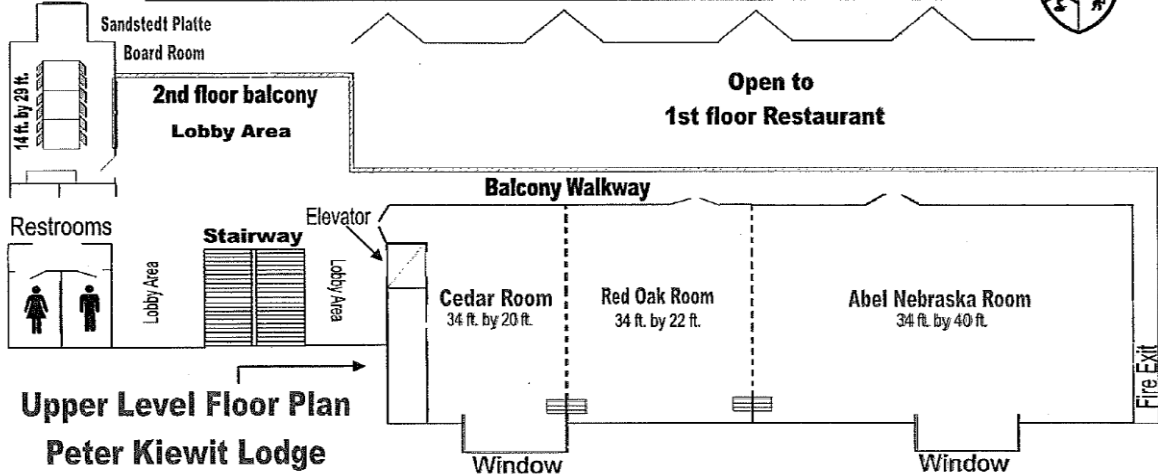
FIRST FLOOR PLAN
1,260 SF LIVING SPACE



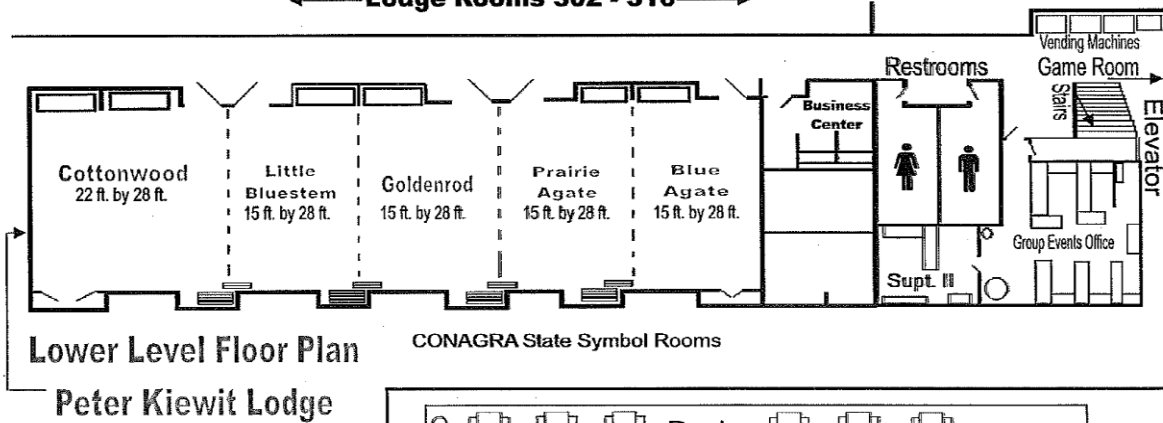
BASEMENT FLOOR PLAN
955 SF LIVING SPACE

GOVERNOR ROW CABINS

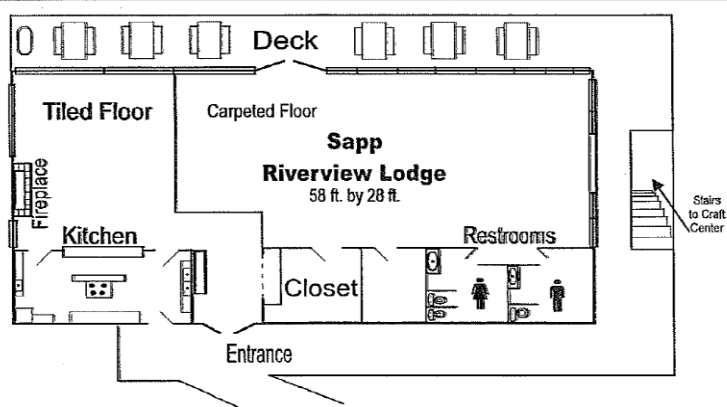
E.T. Mahoney State Park
CONFERENCE FACILITIES & SET-UP



LOWER LEVEL
Lodge Rooms 302 - 316



Located
in the Northwest Corner
of the park
near the Observation
Tower



ATTACHMENT A